



Model MGB-UHF

UHF female terminated

“Quick-Fit” magnetic antenna mount base with 4.7 metres RG58 cable.

UHF male PL259 connector supplied, not fitted

Scratch reduction pad on base. Cable side exits from magnetic base

INSTALLATION GUIDE

www.zcg.com.au

DESCRIPTION

The MGB-UHF UHF female top terminated magnetic mount base and cable set is suitable for mounting these ZCG antennas:

- GRH-TPM VHF high band fibreglass whip 148-174 MHz
- GID-1417 Broadband VHF high band whip 148-174 MHz
- GID-M480-QF UHF CB Radio detachable whip 477 MHz
- Other antenna/whip solutions are available

4.7 metres of RG58 low loss solid core coaxial cable side exits from the magnetic base. The MGB-UHF is supplied with a UHF male PL259 connector for fitment/connection to your device

SELECTING THE MOUNTING POSITION

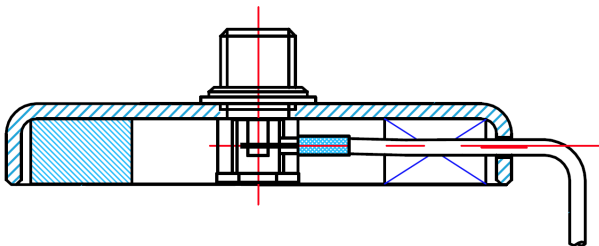
To achieve best performance from your antenna, these are the important principles you should consider when selecting the mounting point:

1. **Mount the antenna + base in as high a place as possible.**
2. **Mount the antenna as far away from other antennas and metallic objects as possible to avoid interference and distortion of the 360° omnidirectional pattern. At least 350 mm side clearance is desirable, preferably more.**
3. **Mount the antenna properly vertical, not at an angle.**

INSTALLATION GUIDE

1. Ensure your magnetic mounting surface is free from debris/obstruction such as dirt/rocks or sharp edges.
2. Place your magnetic base into position and ensure the magnetic adhesion is sufficient to ensure no movement occurs
3. Remove the connector protection cap prior to fitting your whip/antenna onto the base.
4. Remove the cable tie retaining your coaxial cable. No tension should be applied to the cable, all external cable is present outside the mount base. Any tension applied to the cable may cause stretching/breakage of your cable leading to high VSWR or total failure of your system.

Please note: Dis-assembly of the UHF female base is not required prior to fitment of your antenna.

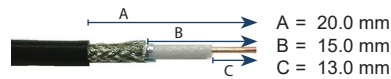


IMPORTANT : Leave some slack in the cable at the point where the cable exits the magnetic base so as not to place unnecessary tension on the cable.

Route the RG58 low loss cable carefully. Avoid high heat areas in the engine bay or locations of high electrical interference such as fuse boxes or electric fans. Ensure that the cable is not stretched excessively and there are no sharp kinks. Use cable ties, but do not pull so tight as to crush the cable. A damaged feeder cable is a cause of high VSWR and reduced performance.

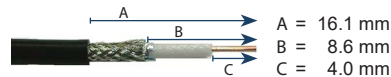
We recommend that you cut the cable to the shortest length necessary, prior to fitting the supplied UHF male PL259 connector or alternate connector - ordered separately.

UHF Male PL259 - SKU: UM-7900 - Included with unit

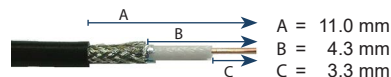


Below are common alternate connector fitment dimensions. Please note the below connectors are ordered separately and not included with standard MGB-UHF.

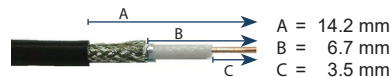
BNC Male - SKU: BM-7965 - order separately



SMA Male - SKU: SM-7963-7 - order separately



N-type Male - SKU: NM-7933-2 - order separately



Attach the connector to your device.

Installation is now complete.